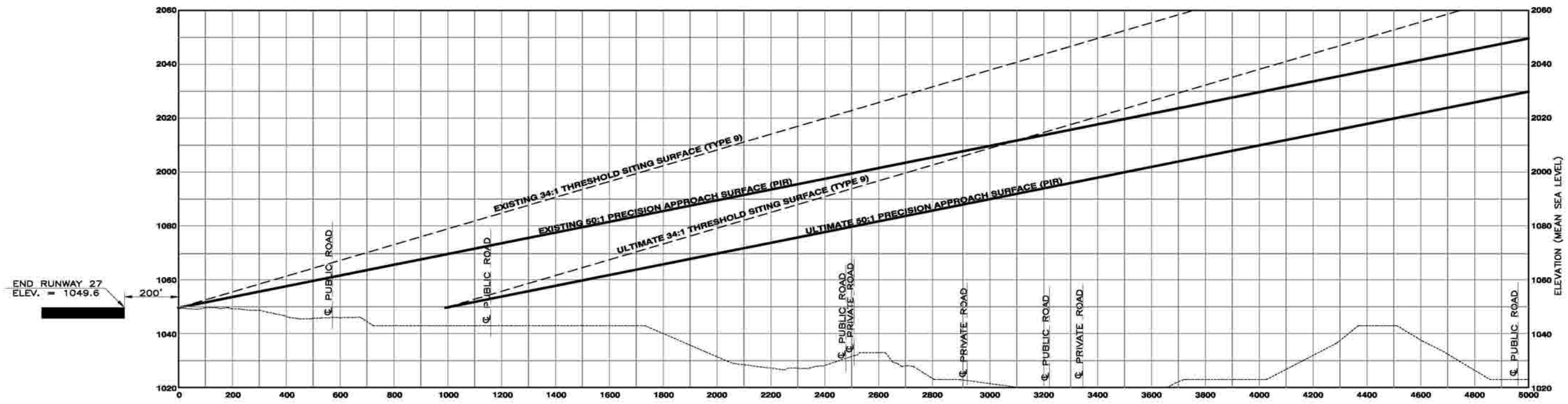


PART 77 OBSTRUCTION/DISPOSITION TABLE

Point Number	Description	Elevation (FT)	Obstruction (FT)	Location	Recommendation
124	TREE	1059	10 =	Primary	To Be Removed
127	TREE	1094	43 =	Transitional	To Be Removed
128	TREE	1088	30 =	Runway 27 Approach	To Be Removed
129	TREE	1084	18 =	Runway 27 Approach	To Be Removed

NOTES:
 1. NO SURVEY OR OBSTRUCTION STUDY WAS COMPLETED AS PART OF THIS ALP UPDATE. OBSTRUCTION INFORMATION IS BASED ON THE 2005 OBSTRUCTION STUDY COMPLETED BY THE FAA. OBSTRUCTION PENETRATION WAS CALCULATED BASED ON PART 77 SURFACES.



BY APPROVED

REV. DATE DESCRIPTION

GARVER ENGINEERS
 1088 EAST MALLSAP ROAD, FAYETTEVILLE, ARKANSAS 72703 (479) 527-8100

MENA INTERMOUNTAIN MUNICIPAL AIRPORT
 MENA, ARKANSAS

AIRPORT LAYOUT PLAN

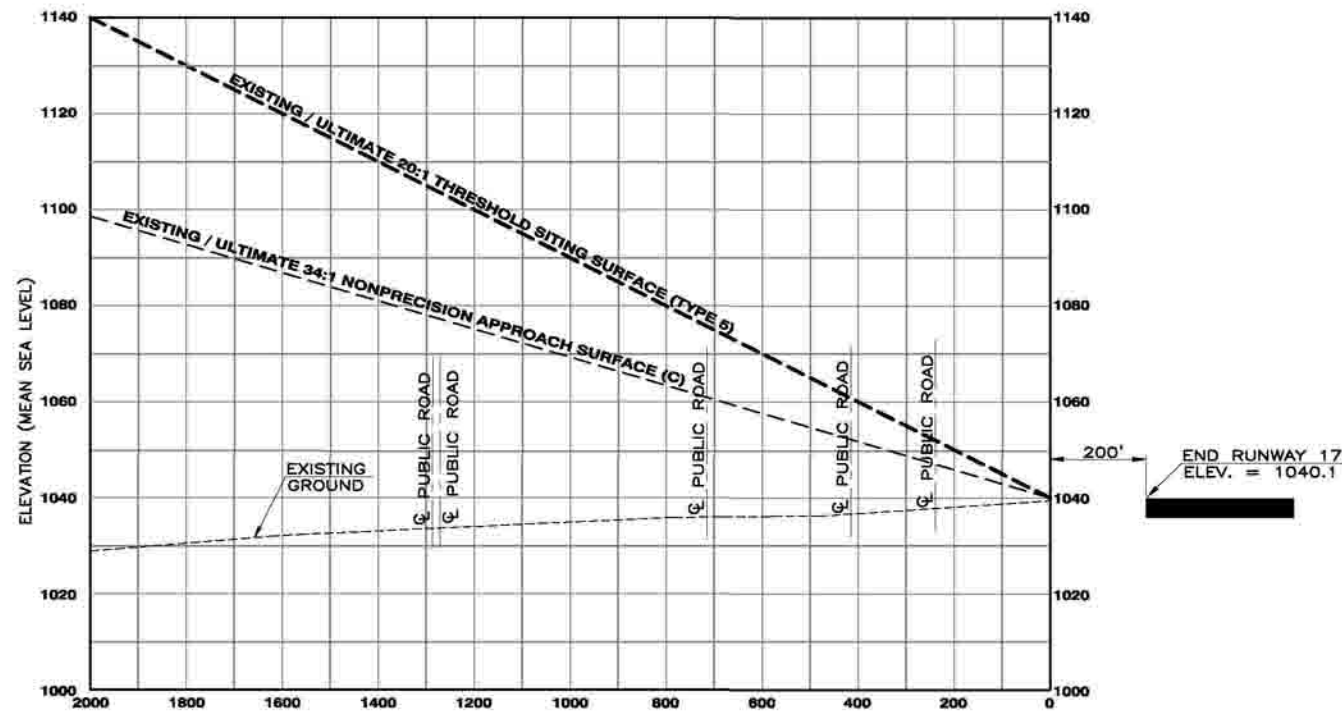
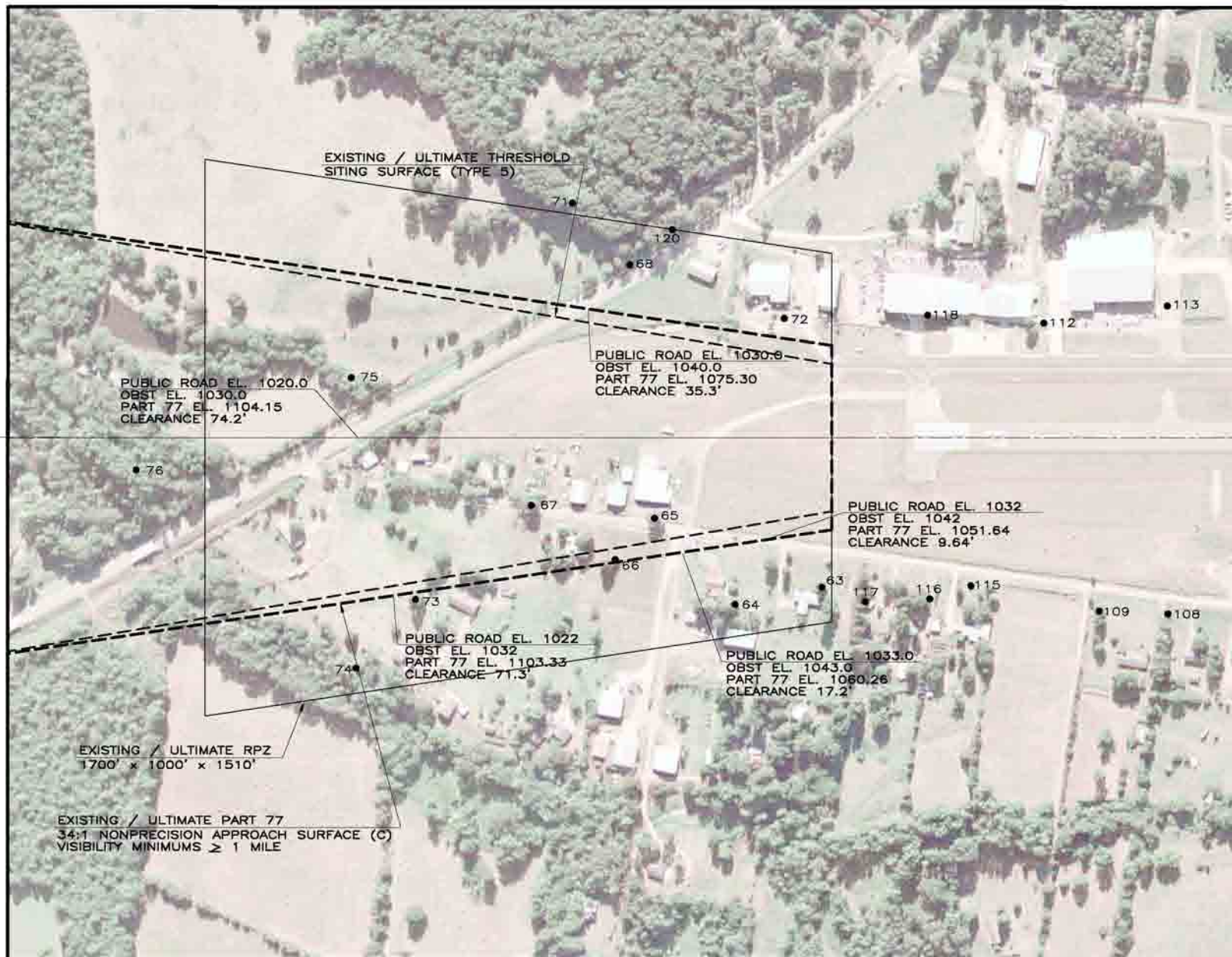
RUNWAY 27
 INNER APPROACH
 PLAN AND
 PROFILE

Job No.: 0805-7500
 Date: NOVEMBER, 2008
 Designed by: KDT
 Drawn by: NBG

Sheet Number
9

L:\2005\0596-7500 Mena Airport On-Call Services\Drawings\ALP Set\DES\MENA-009.dwg, 12/10/2008 4:40:51 PM, ATWhite, Adobe PDF-Press Quality.pc3, Tabloid, 1:400

L:\2005\0596-7500 Mena Airport On-Call Services\Drawings\ALP Set\DES\MENA-006.dwg, 12/10/2008 3:34:05 PM, ATWhite, Adobe PDF, User119, 1:400



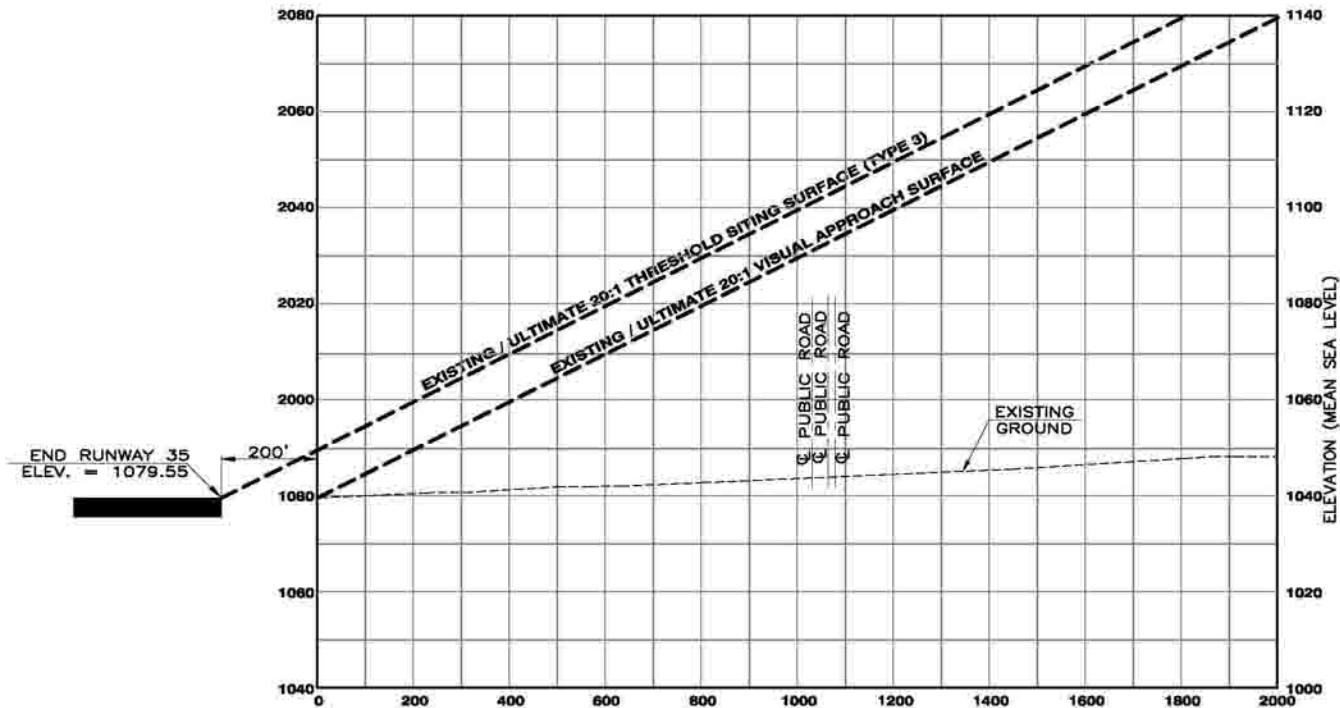
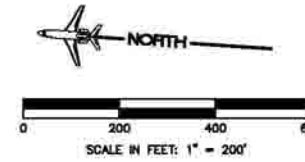
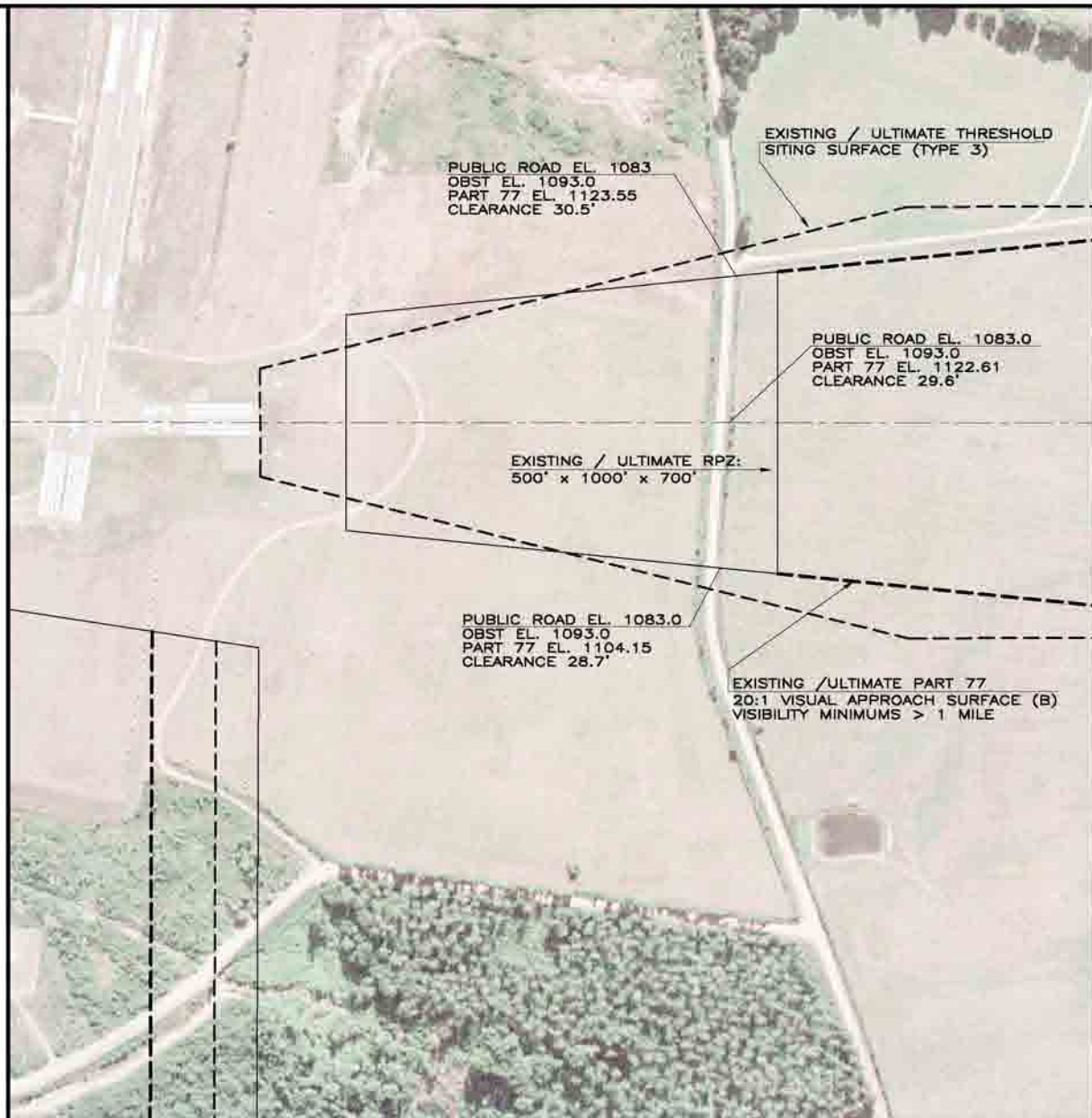
PART 77 OBSTRUCTION/DISPOSITION TABLE					
Point Number	Descriptions	Elevation (FT)	Obstruction (FT)	Location	Recommendation
53	TREE	1095	50 =	Transitional	To Be Removed
64	TREE	1094	54 =	Transitional	To Be Removed
65	TREE	1074	19 =	Runway 17 Approach	To Be Removed
66	TREE	1077	19 =	Runway 17 Approach	To Be Removed
67	TREE	1081	18 =	Runway 17 Approach	To Be Removed
68	TREE	1093	3 =	Transitional	To Be Removed
71	TREE	1115	0 =	Transitional	To Be Removed
72	TREE	1071	6 =	Transitional	To Be Removed
73	TREE	1075	0 =	Runway 17 Approach	To Be Removed
74	TREE	1090	5 =	Transitional	To Be Removed
75	TREE	1077	0 =	Runway 17 Approach	To Be Removed
76	TREE	1118	23 =	Runway 17 Approach	To Be Removed
108	TREE	1087	19 =	Transitional	To Be Removed
109	TREE	1078	15 =	Transitional	To Be Removed
112	TREE	1081	15 =	Transitional	To Be Removed
113	WIND SOCK	1086	12 =	Transitional	Lighted
115	TREE	1076	26 =	Transitional	To Be Removed
116	TREE	1085	52 =	Transitional	To Be Removed
117	TREE	1095	41 =	Transitional	To Be Removed
118	BUILDING	1072	5 =	Transitional	To Be Removed
120	TREE	1110	5 =	Transitional	To Be Removed

NOTES:
 1. NO SURVEY OR OBSTRUCTION STUDY WAS COMPLETED AS PART OF THIS ALP UPDATE. OBSTRUCTION INFORMATION IS BASED ON THE 2005 OBSTRUCTION STUDY COMPLETED BY THE FAA. OBSTRUCTION PENETRATION WAS CALCULATED BASED ON PART 77 SURFACES.

REV.	DATE	DESCRIPTION	BY	APPROVED
MENA INTERMOUNTAIN MUNICIPAL AIRPORT MENA, ARKANSAS AIRPORT LAYOUT PLAN				
RUNWAY 17 INNER APPROACH PLAN AND PROFILE				
Job No.: 0805-7500 Date: NOVEMBER, 2008 Designed by: KDT Drawn by: NBG				
Sheet Number 6				

GARVERENGINEERS
 1088 EAST MILLISAP ROAD, FAYETTEVILLE, ARKANSAS 72703, (479) 527-9100

L:\2005\0996-7500 Mena Airport On-Call Services\Drawings\ALP Set\DES\MENA-007.dwg, 12/10/2008 3:46:11 PM, ATWhite, Adobe PDF-Press Quality.pc3, Tabloid, 1:400



Point Number	Description	Elevation (FT)	Obstruction (FT)	Location	Recommendation

NOTES:
 1. NO SURVEY OR OBSTRUCTION STUDY WAS COMPLETED AS PART OF THIS ALP UPDATE. OBSTRUCTION INFORMATION IS BASED ON THE 2005 OBSTRUCTION STUDY COMPLETED BY THE FAA. OBSTRUCTION PENETRATION WAS CALCULATED BASED ON PART 77 SURFACES.

REV.	DATE	DESCRIPTION	BY	APPROVED

GARVER ENGINEERS
 1088 EAST MILLSAP ROAD, FAYETTEVILLE, ARKANSAS 72703, (479) 527-8100

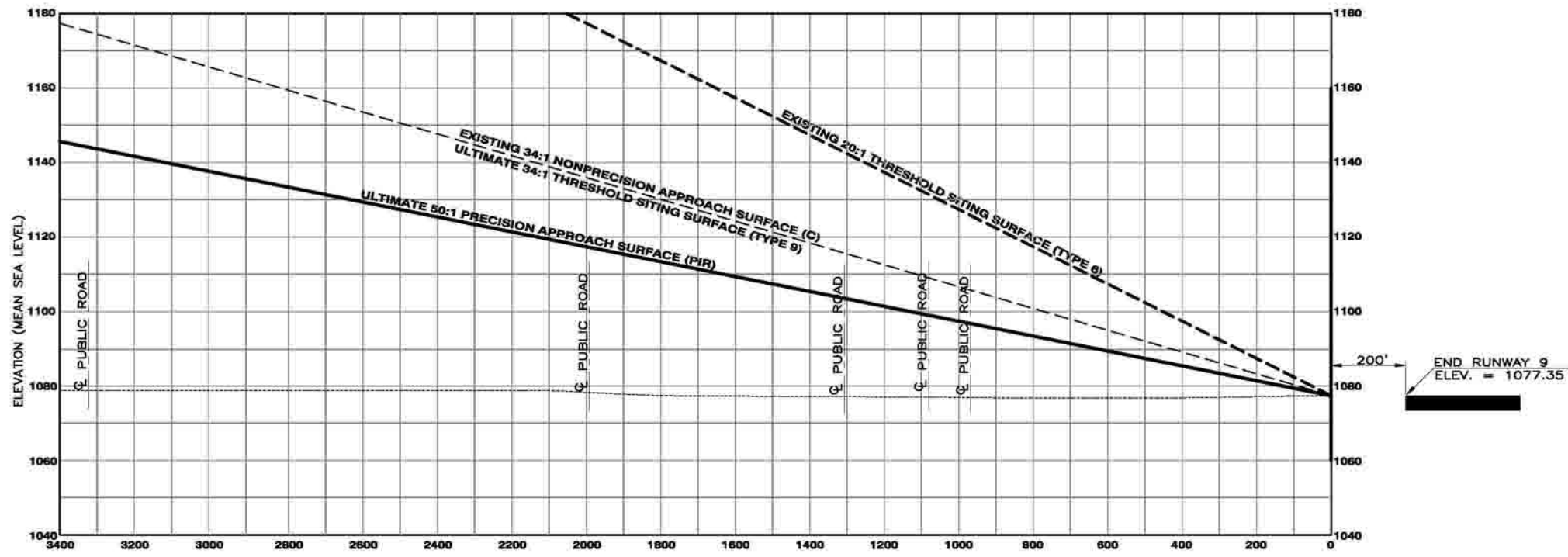
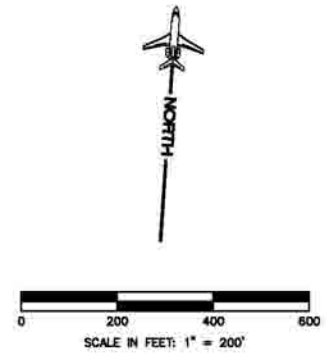
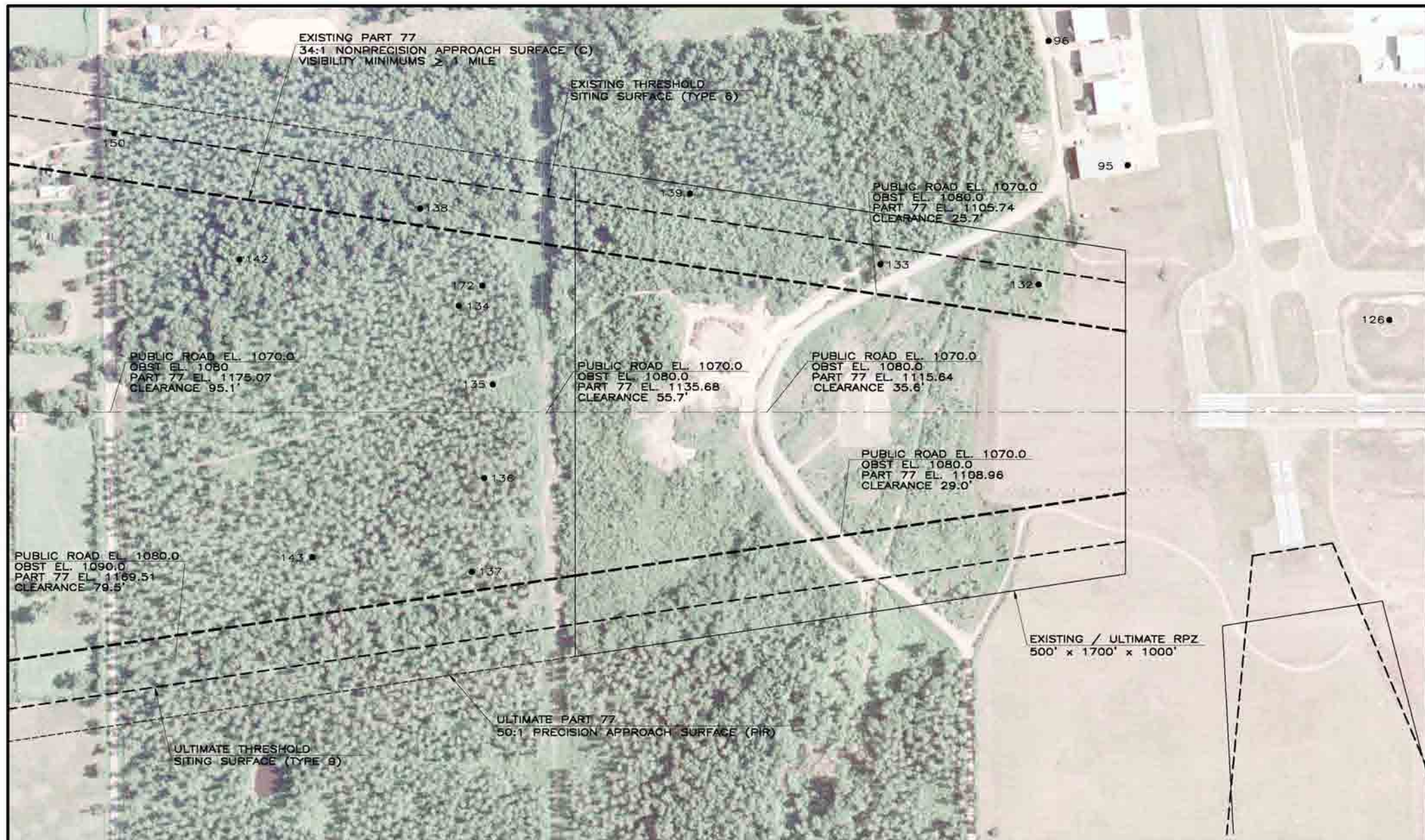
MENA INTERMOUNTAIN MUNICIPAL AIRPORT
 MENA, ARKANSAS
 AIRPORT LAYOUT PLAN

RUNWAY 35
 INNER APPROACH
 PLAN AND
 PROFILE

Job No.: 0805-7500
 Date: NOVEMBER, 2008
 Designed by: KDT
 Drawn by: NBG

Sheet Number
7

L:\2005\0596-7500 Mena Airport On-Call Services\Drawings\ALP Set\DES\MENA-008.dwg, 12/10/2008 3:56:59 PM, ATWhite, Adobe PDF-Press Quality.pc3, User119, 1:400



PART 77 OBSTRUCTION/DISPOSITION TABLE					
Point Number	Description	Elevation (FT)	Obstruction (FT)	Location	Recommendation
95	BUILDING	1096	25 ±	Transitional	
96	POLE	1097	0 ±	Transitional	
126	OL WINDSOCK	1095	21 ±	Primary	
132	TREE	1100	18 ±	Runway 9 Approach	To Be Removed
133	TREE	1097	±	Runway 9 Approach	To Be Removed
134	TREE	1154	36 ±	Runway 9 Approach	To Be Removed
135	TREE	1146	30 ±	Runway 9 Approach	To Be Removed
136	TREE	1148	30 ±	Runway 9 Approach	To Be Removed
137	TREE	1144	26 ±	Runway 9 Approach	To Be Removed
138	TREE	1147	27 ±	Runway 9 Approach	To Be Removed
142	TREE	1171	40 ±	Runway 9 Approach	To Be Removed
143	TREE	1161	34 ±	Runway 9 Approach	To Be Removed
150	TREE	1167	28 ±	Transitional	To Be Removed
172	TREE	1150	33 ±	Runway 9 Approach	To Be Removed

NOTES:
 1. NO SURVEY OR OBSTRUCTION STUDY WAS COMPLETED AS PART OF THIS ALP UPDATE. OBSTRUCTION INFORMATION IS BASED ON THE 2005 OBSTRUCTION STUDY COMPLETED BY THE FAA. OBSTRUCTION PENETRATION WAS CALCULATED BASED ON PART 77 SURFACES.

REV.	DATE	DESCRIPTION	BY	APPROVED

MENA INTERMOUNTAIN MUNICIPAL AIRPORT
 MENA, ARKANSAS

AIRPORT LAYOUT PLAN

GARVER ENGINEERS
 1088 EAST MILLSAP ROAD, FAYETTEVILLE, ARKANSAS 72703, (479) 527-9100

Job No.: 0805-7500
 Date: NOVEMBER, 2008
 Designed by: KDT
 Drawn by: NBG

Sheet Number
8